

VERTECH

**VERTECH Central Station Software
Installation Manual**

Installation Manual
July 2006

VERTECH

Table of Contents

1.0 Introduction.....	3
2.0 Vertx Access Control System 1.0 Installation Guide	3
3.0 Vertx Access Control System (Client) Setup Wizard Installation Guide	8
4.0 Vertx Access Control System (Server) Setup Wizard	11
5.0 MySQL Server Instance Configuration Wizard 1.0.3	16
6.0 MySQL Connector Net 1.0.7 Setup Wizard	19
7.0 Setup Wizard for MySQL Connector/OCBD 3.51	21

VERTECH

1.0 Introduction

This document details the installation manual for the Vertx Access Control System. It details a guide on installation procedures.

2.0 Vertx Access Control System 1.0 Installation Guide

This guide is to ensure the Vertx Access Control System is properly installed in order to ensure the smooth operation of the system.

- a. Place the CD into the drive
- b. Launch the Vertx Access Control System installation. You will view the following:

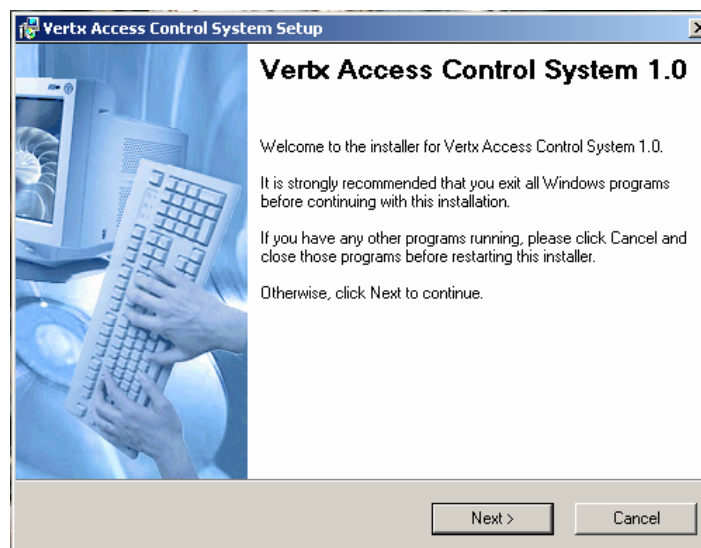


Figure 1: Vertx Access Control System Setup Main Menu

- c. Ensure all other applications are closed before proceeding.
- d. Select 'Next' to continue.

VERTECH



Figure 2: License Agreement

- e. You will be prompted with the License Agreement. (Refer to Figure 2)
- f. Select "I agree to the terms of this license agreement"
- g. Click Next to continue the setup.
- h. You will be directed to the User Information page (Refer to Figure 3)

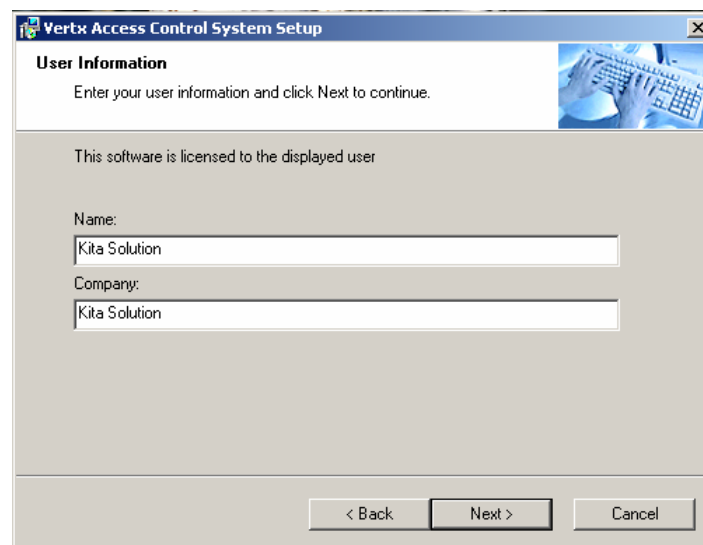


Figure 3: User information

- i. Enter the User Name and Company Name
- j. Select Next to continue the setup
- k. You will be directed to the Installation Type (Refer to Figure 4)

VERTECH

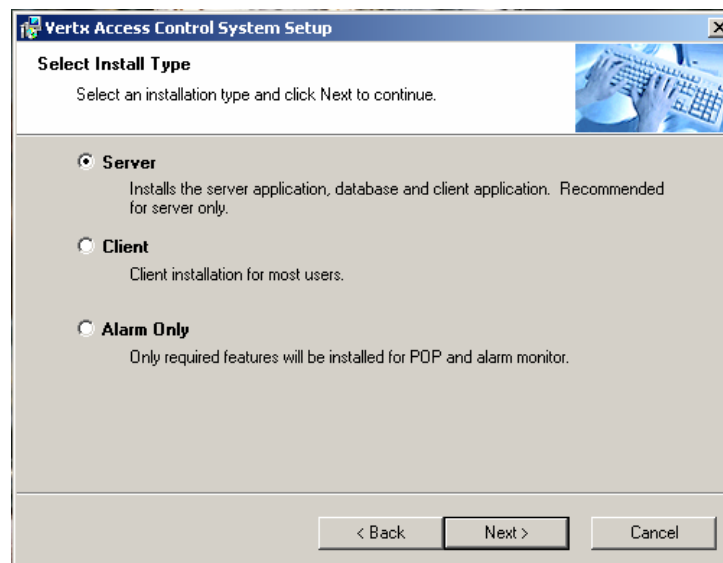


Figure 4: Installation Type

- l. Select “Server” to install the server,
- m. Select Next to continue the setup.

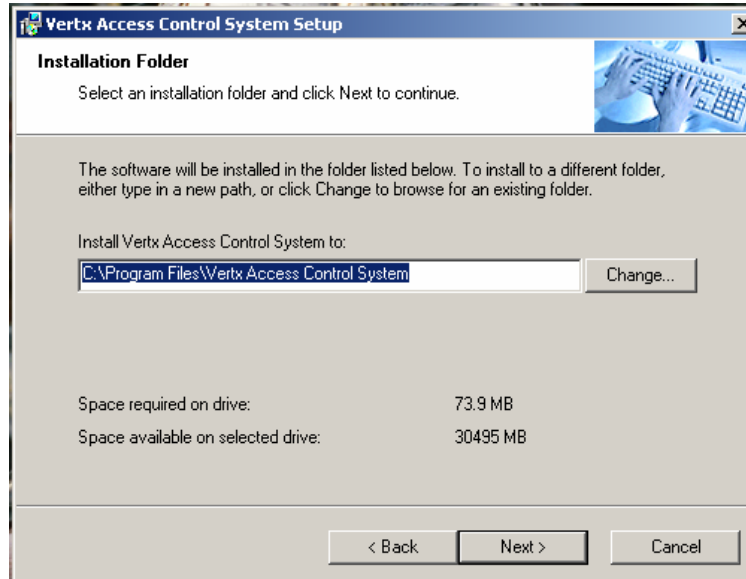


Figure 5: Installation Folder

- n. Chose the directory where you want to install the components of the server
- o. Select Next to continue the setup.

VERTECH

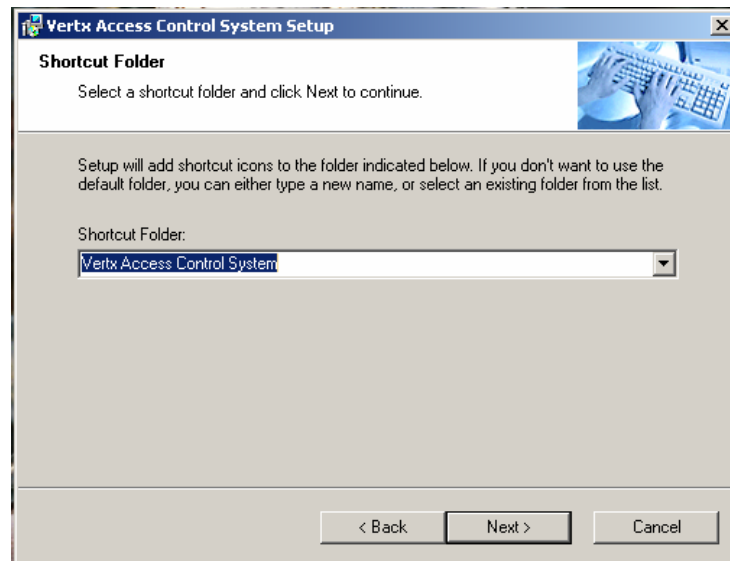


Figure 6: Shortcut Folder

- p. Insert the name of the folder to appear in the main menu,
- q. Select Next to continue the setup.

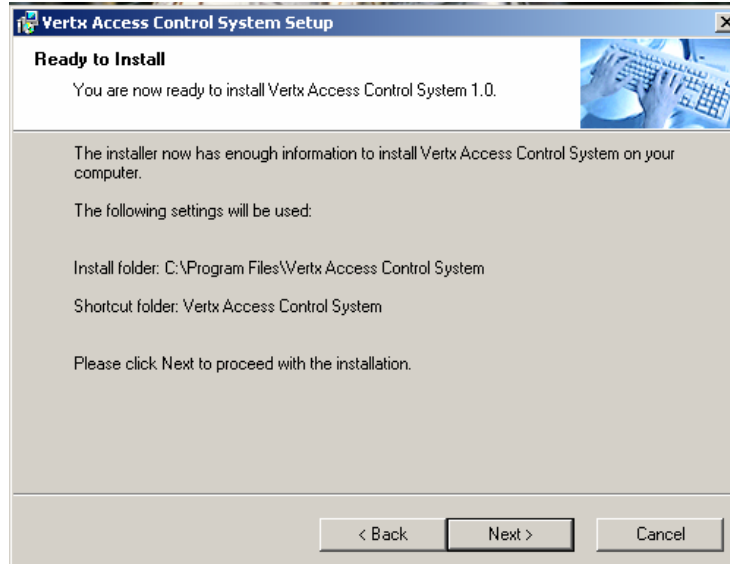


Figure 7: Ready to Install

- r. Select Next to continue the setup.

VERTECH

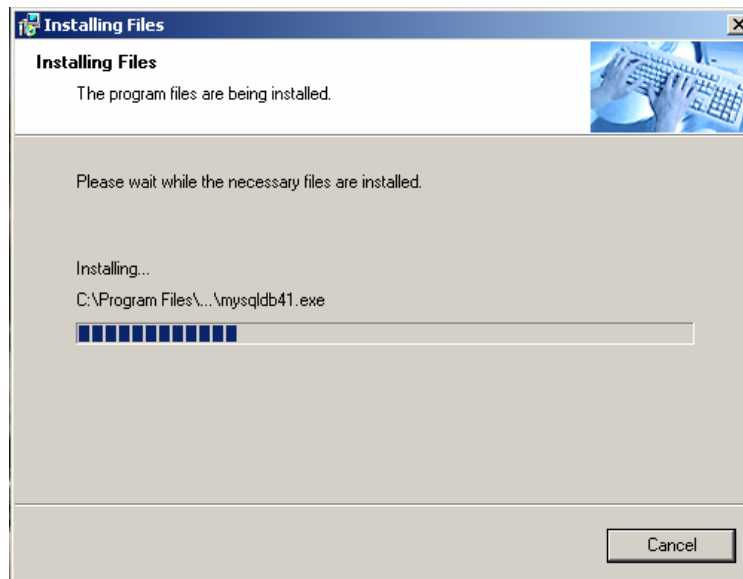


Figure 8: Installing Files

- s. The system will now be installed onto the preset directory.

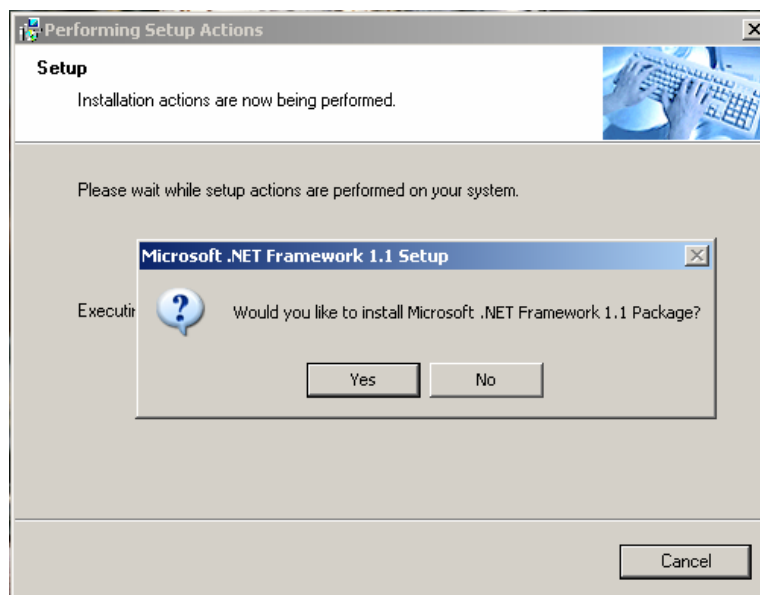


Figure 9: Microsoft .Net Framework 1.1 Setup

- t. As the server is using Window XP Professional, the Microsoft .Net Framework 1.1 should be pre-installed
- u. Select No to complete the Vertx Access Control System setup process
- Nb. However, if required, please click Yes to install the Microsoft .Net Framework 1.1*

VERTECH

3.0 Vertx Access Control System (Client) Setup Wizard Installation Guide

The Client Installation is not required if the Client Application and the Server Application is running from the same computer. However, it is recommended for the Client and the Server Application to operate from separate computers.

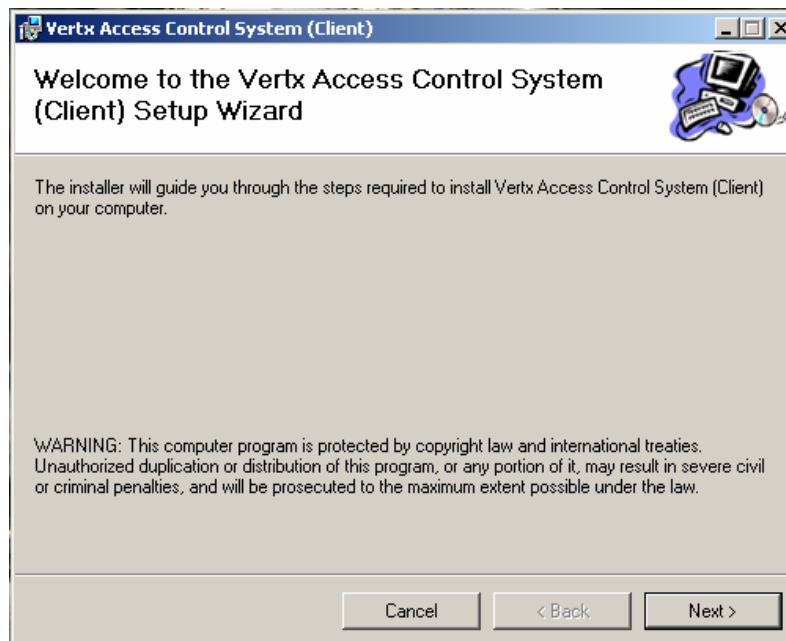


Figure 10: Client System Setup Wizard

- a. You will be prompted by the Setup Wizard (Refer to Figure 10)
- b. Click Next to continue setup.

VERTECH

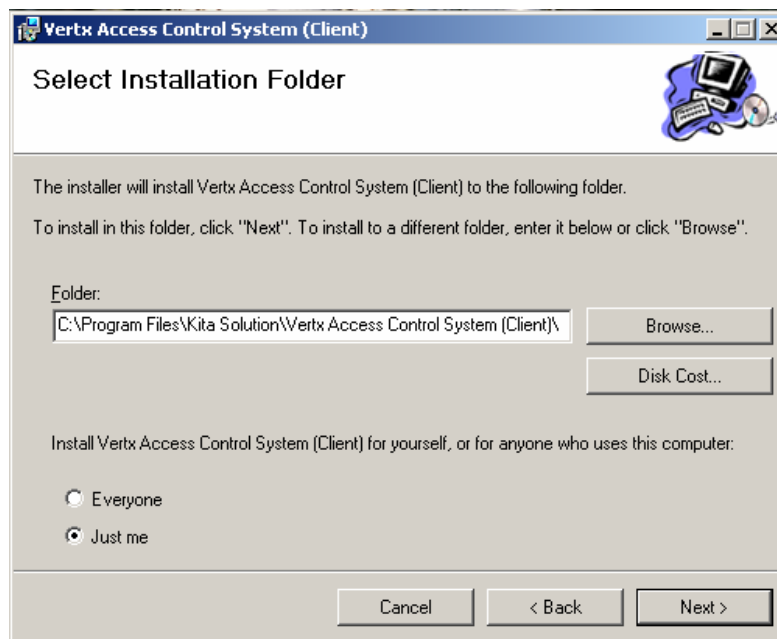


Figure 11: Installation Folder Selection

- c. Select the folder to install the Client Application
- d. Select the user(s) able to access the Client Application
(Just me: only current user can access this application, Everyone: every user of the computer can access the Client Application).
- e. Click Next to continue setup.

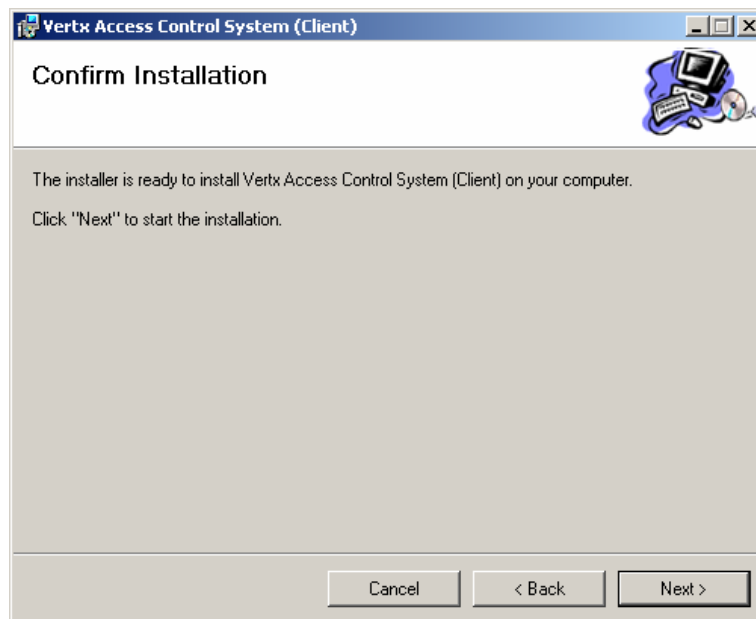


Figure 12: Installation Confirmation

VERTECH

- f. Click Next to start the installation

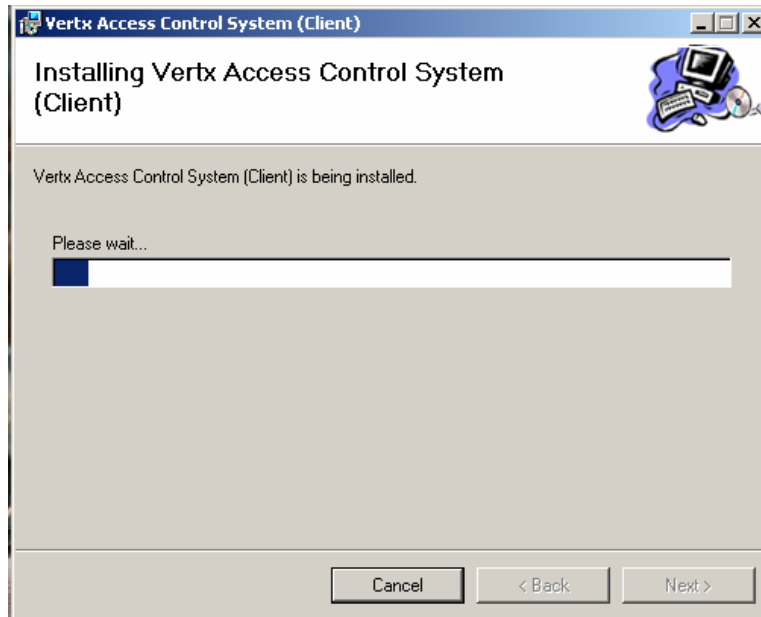


Figure 13: Installation Progress

- g. The Installation is being installed. Please wait for the installation to complete

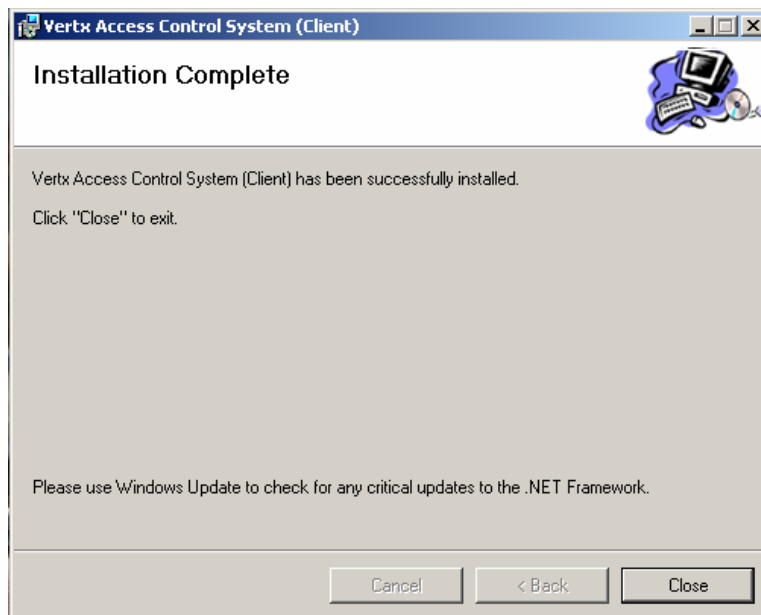


Figure 14: Installation Complete

VERTECH

4.0 Vertx Access Control System (Server) Setup Wizard

- a. The next step is to setup the Vertx Access Server System.

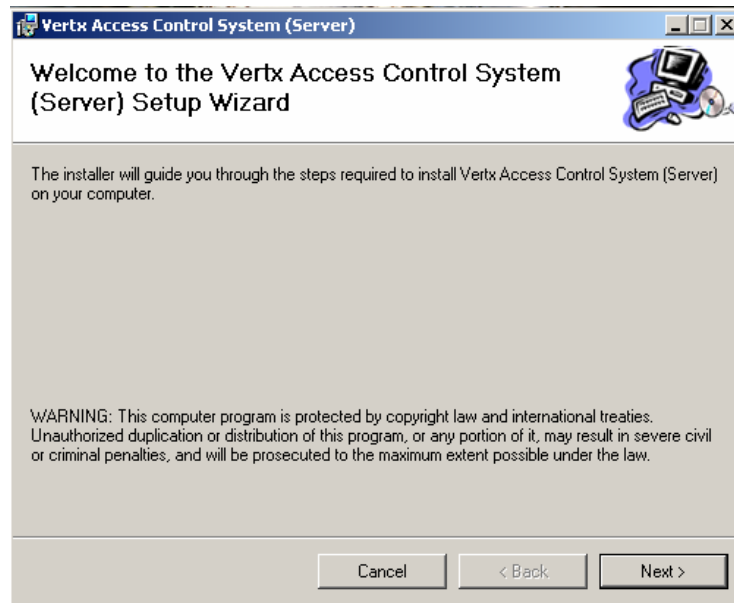
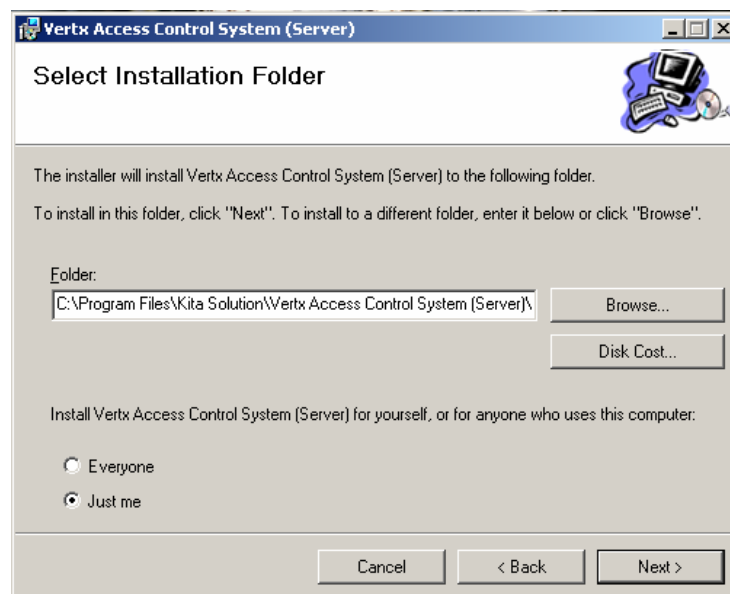


Figure 15: Server Vertx Setup Wizard

- b. Select 'Next' at Figure 15.



VERTECH

Figure 16: Select Installation Folder

- c. Select the folder to install the Server Application
- d. Select the user(s) able to access the Server Application
(Just me: only current user can access this application, Everyone: every user of the computer can access the Client Application).
- e. Click Next to continue setup.

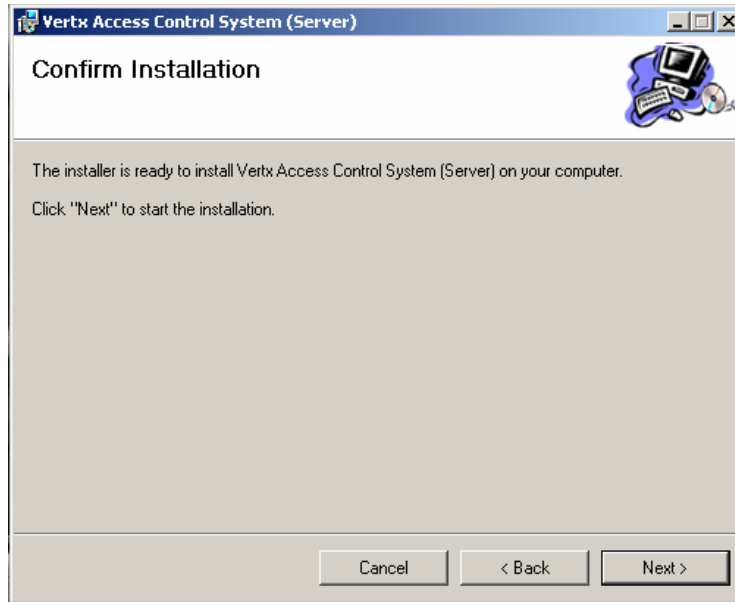
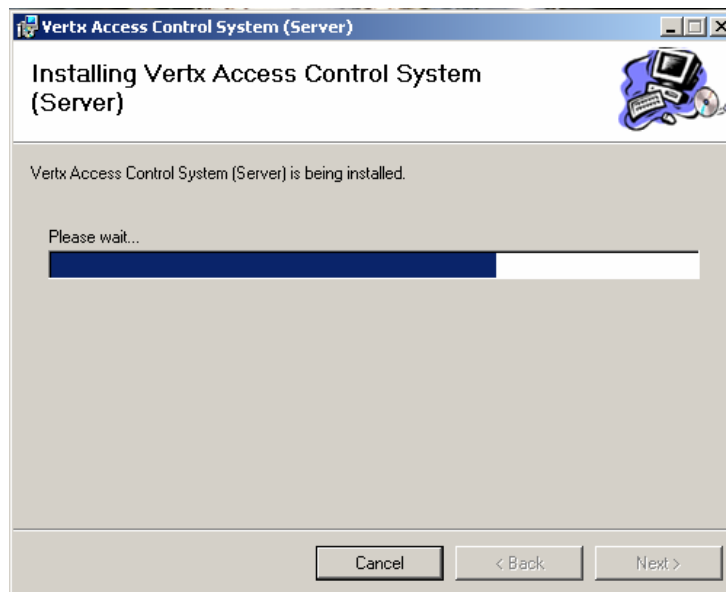


Figure 17: Installation Confirmation

- f. Click 'Next' to start the Installation process.



VERTECH

Figure 18: Installation process

- g. The server installation is being installed. Please wait for the installation to complete.

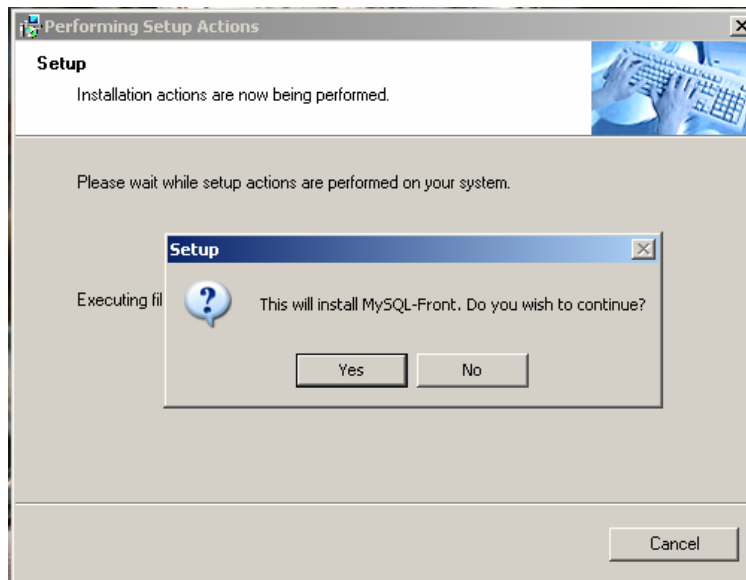


Figure 19: MySQL-Front Installation

- h. The installation will continue by installing the MySQL-Front,
i. If this application is required by the user, click “Yes” to continue the installation,
j. If this application is not required, click “No” to cancel the installation of MySQL-Front and continue installation of the server.



VERTECH

Figure 20: MySQL Server 4.1 Setup Wizard

- k. The installation continues with the installation of MySQL Server 4.1,
- l. Please click Next to continue the installation.

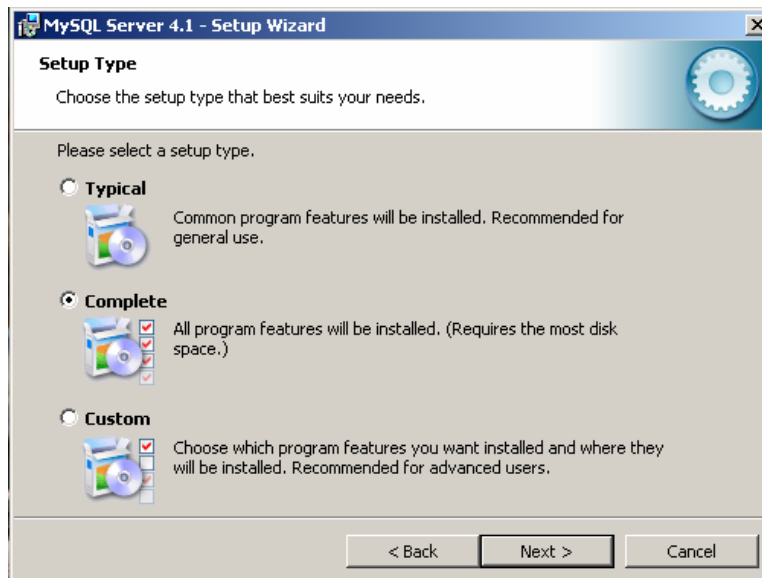


Figure 21: Select Setup Type

- m. Please install the complete MySQL 4.1 by selecting the “Complete” option box
- n. Select ‘Next’ to continue the installation.

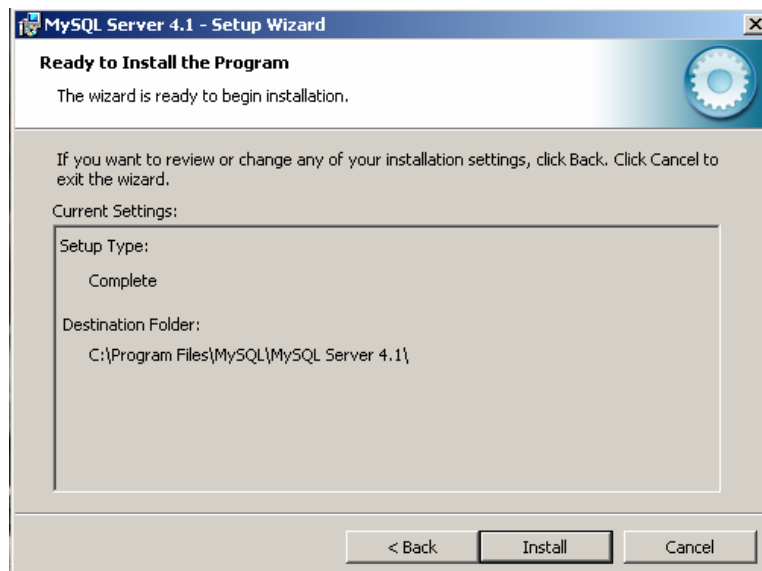


Figure 22: Installation Confirmation

VERTECH

- o. Select 'Install' to continue the installation

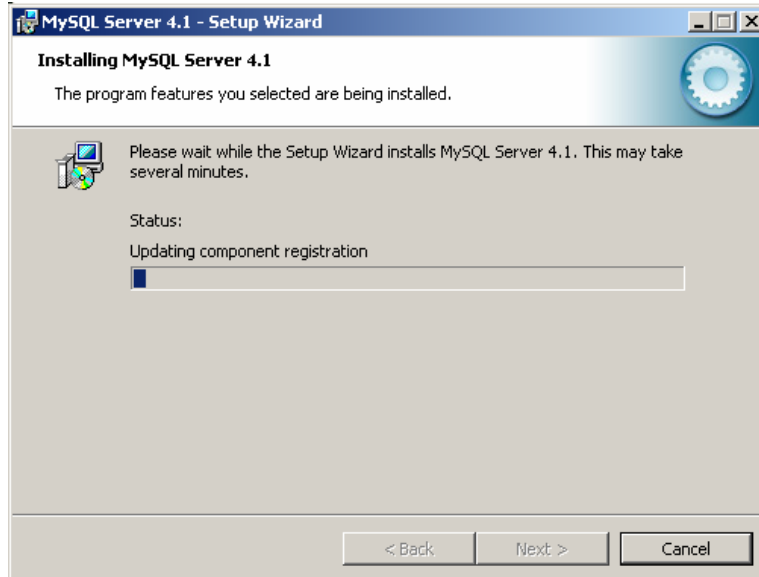


Figure 23: MySQL Server 4.1 Installation

- p. Please wait for the MySQL 4.1 Installation to complete

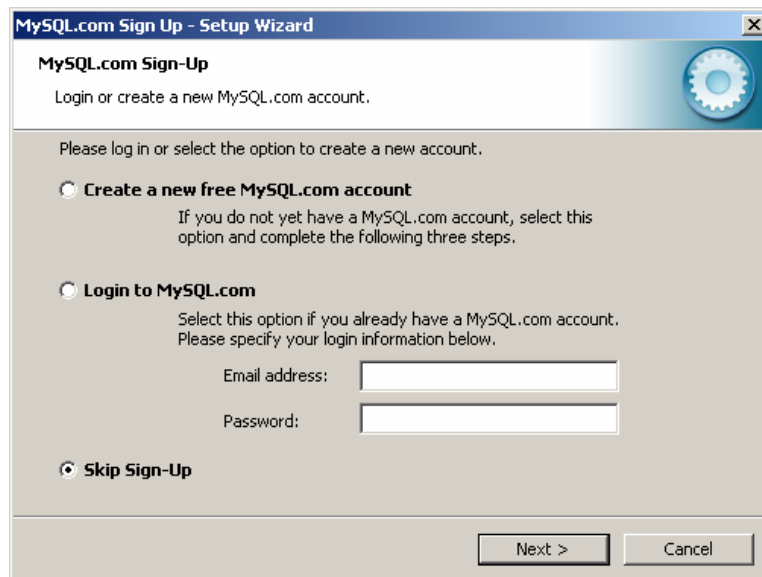


Figure 24: MySQL.com Sign-up

- q. Select "Skip Sign-Up" on the option box
r. Select 'Next' to continue the installation

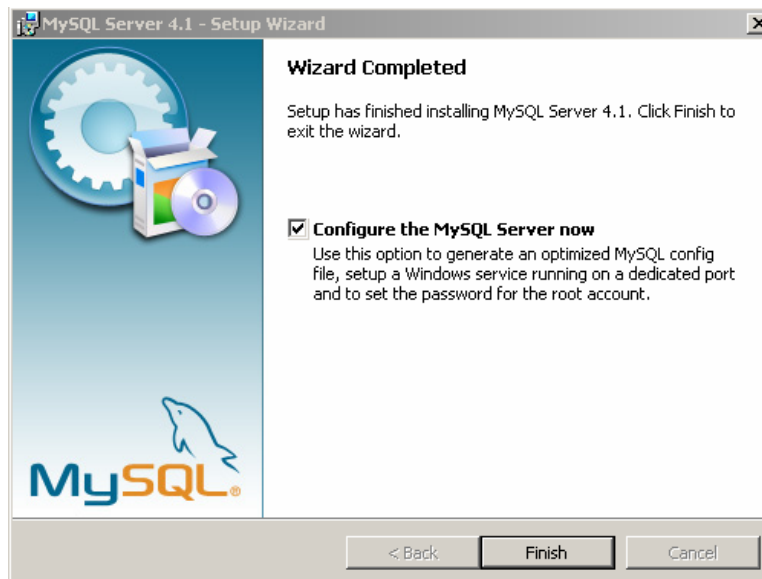


Figure 25: Wizard Complete

- s. Ensure the check box “Configure the MySQL Server Now” is selected
- t. Select ‘Finish’ to continue the configuration.

5.0 MySQL Server Instance Configuration Wizard 1.0.3

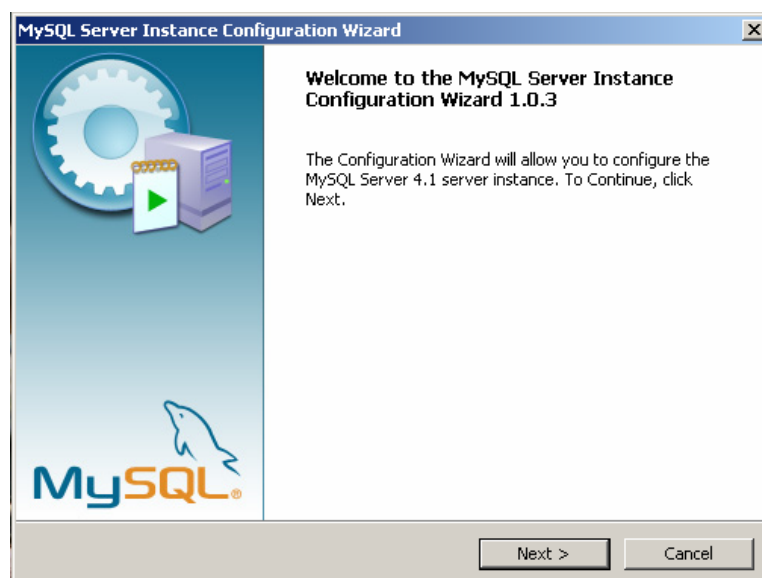


Figure 26: MySQL Server Instance Configuration Wizard 1.0.3

- a. Select ‘Next’ to continue the configuration

VERTECH

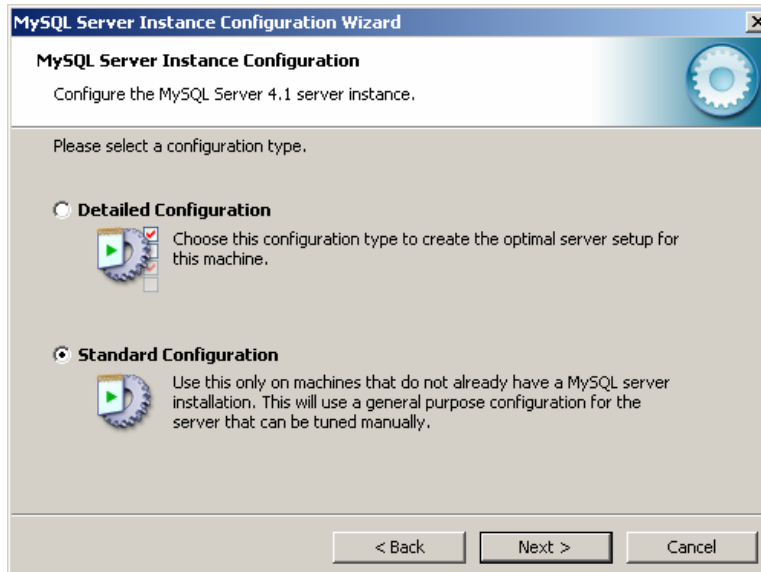


Figure 27: Standard MySQL Server Configuration

- b. Select “Standard Configuration” on the option box
- c. Select ‘Next’ to continue the configuration



Figure 28: MySQL Server Instance Configuration

- d. Make sure the “Install As Window Service”, “Launch the MySQL Server automatically” and “Include Bin Directory in Window Path” options are selected
- e. Select ‘Next’ to continue the configuration.

VERTECH



Figure 29: MySQL Server Instance Configuration

- f. Select the “Modify Security Settings”
- g. Enter the password for the root user
- h. Select ‘Next’ to continue the installation,

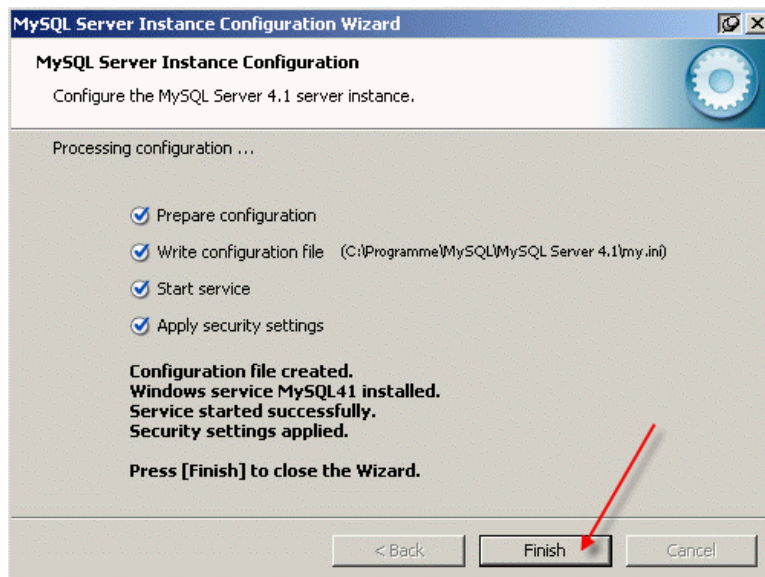


Figure 30: Processing MySQL Server Instance Configuration

- i. Select “execute”
- j. Ensure all the processes is successful

6.0 MySQL Connector Net 1.0.7 Setup Wizard



Figure 31: MySQL Connector Net 1.0.7 Setup Wizard

- a. The installation continues with installing the MySQL connector,
- b. Select 'Next' to continue

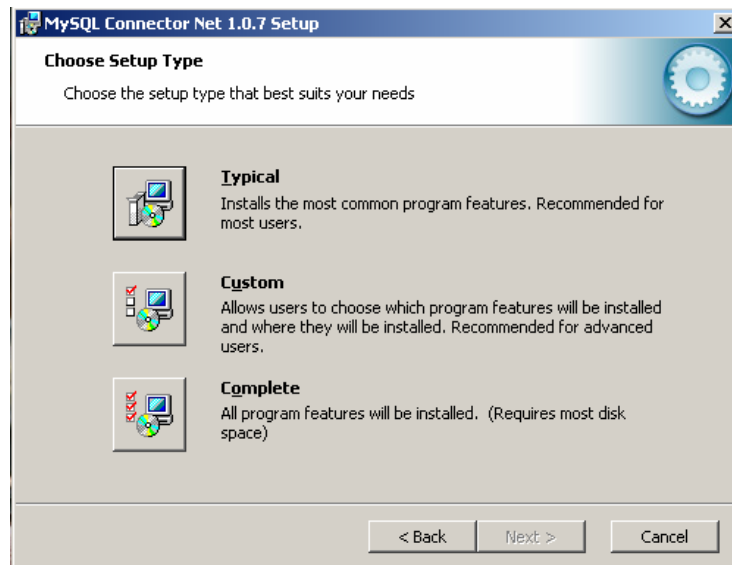


Figure 32: Chose Setup Type

- c. Select the complete installation type

VERTECH

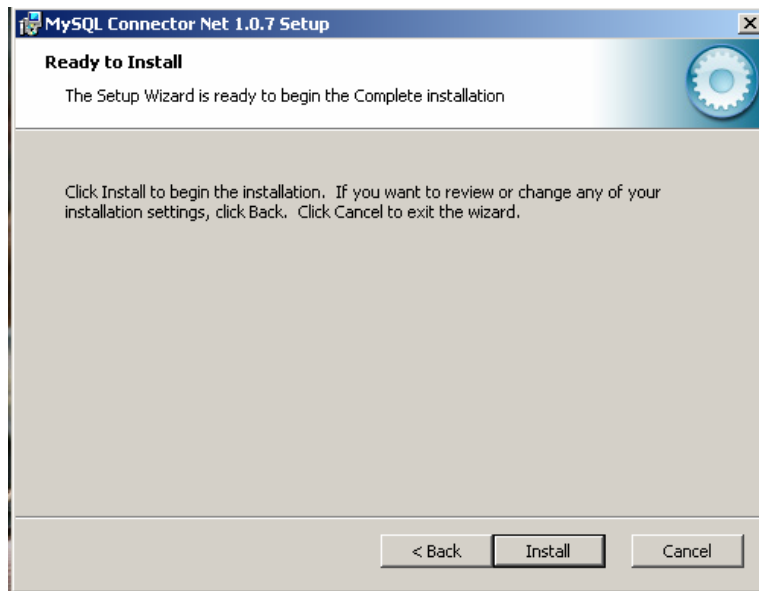


Figure 33: Commence Installation

- d. Select 'Install' to continue

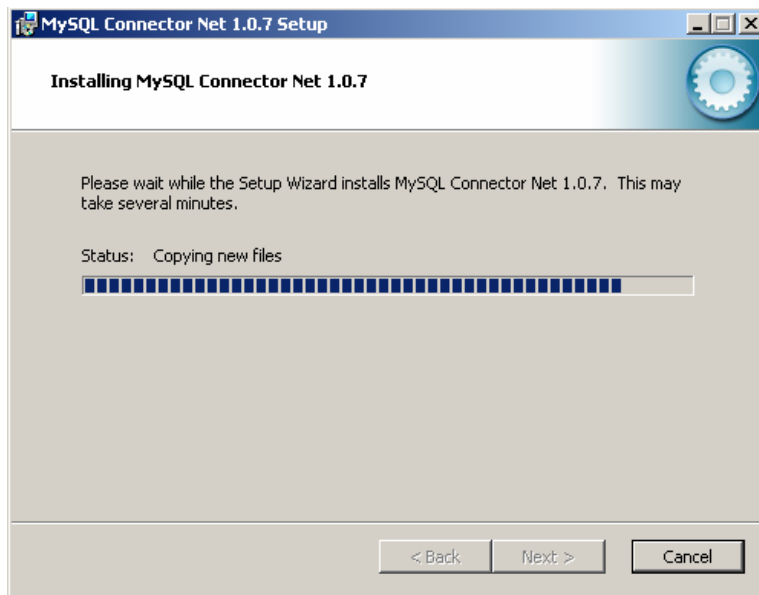


Figure 34: Installation Progress

- e. Please wait for the installation to complete

VERTECH

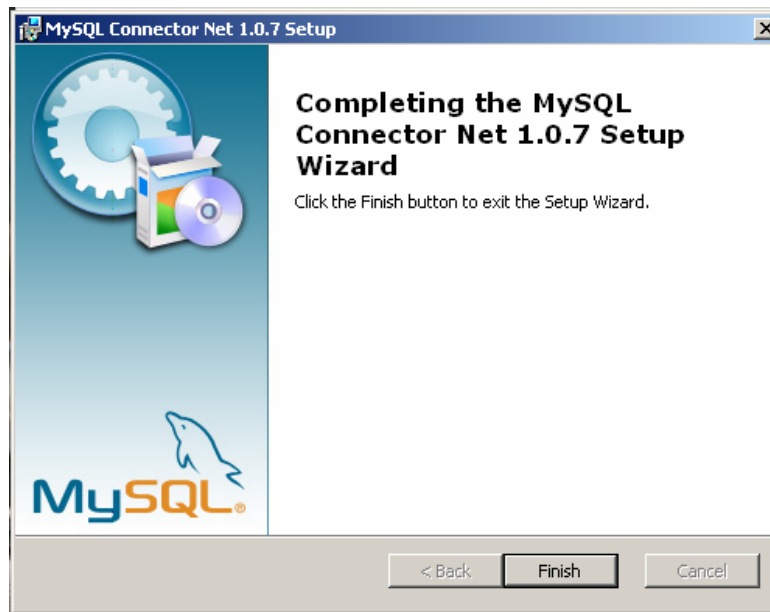


Figure 35: Completing the Setup

- f. Select 'Finish' to complete the installation

7.0 Setup Wizard for MySQL Connector/OCBD 3.51



Figure 36: Setup Wizard for MySQL Connector/ODBC 3.51

- a. The installation continues by installing the ODBC connector,

VERTECH

- b. Select 'Next' to continue

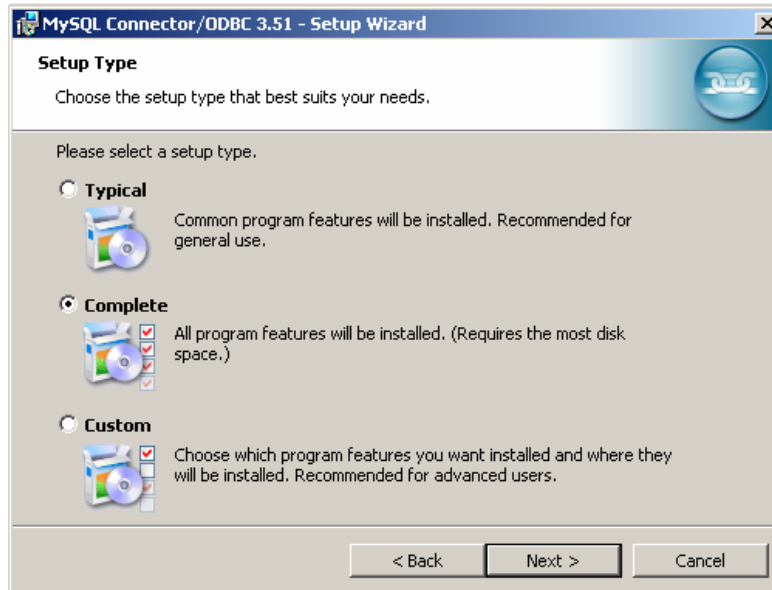


Figure 37: Select Setup Type

- c. Please select the complete installation
d. Select 'Next'

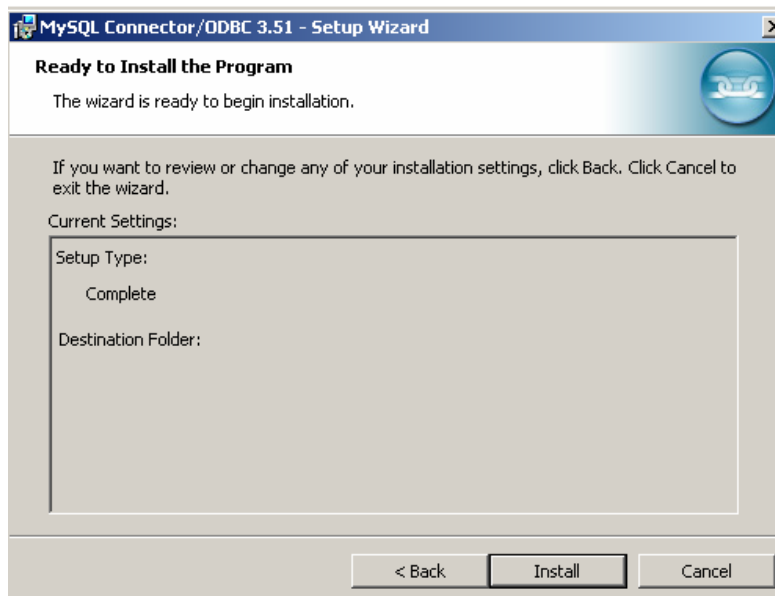


Figure 38: Ready to Install MySQL Connector/ODBC 3.51

- e. Select 'install' to commence the installation

VERTECH

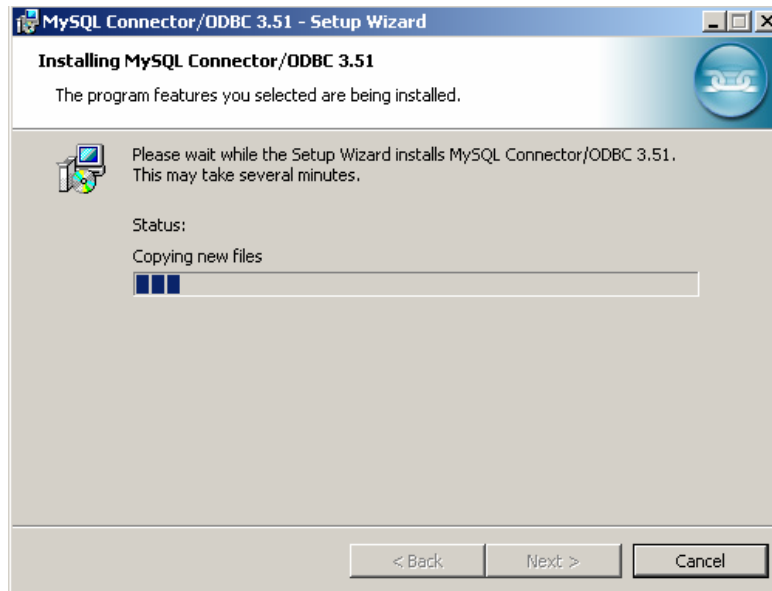


Figure 39: Installing MySQL Connector/ODBC 3.51

- f. Please wait for the installation to complete

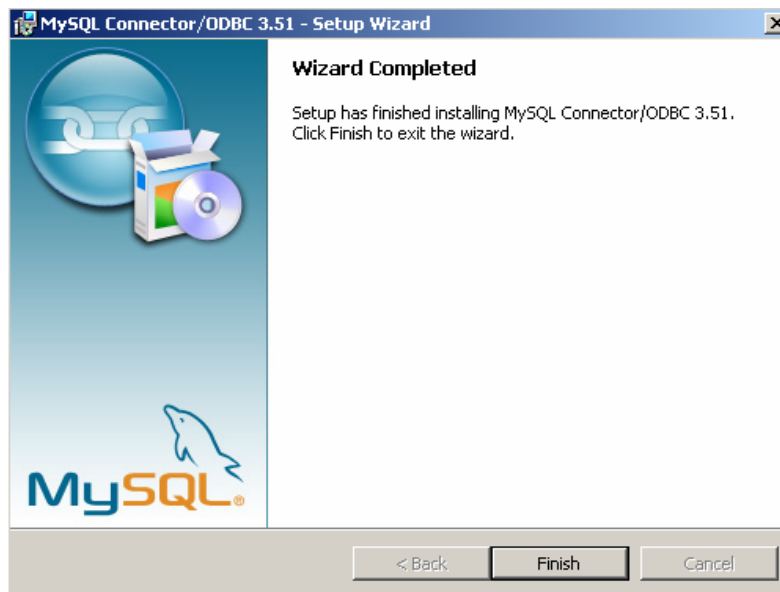


Figure 40: MySQL Connector/ODBC Wizard complete

- g. Select 'Finish' to complete the installation

VERTECH

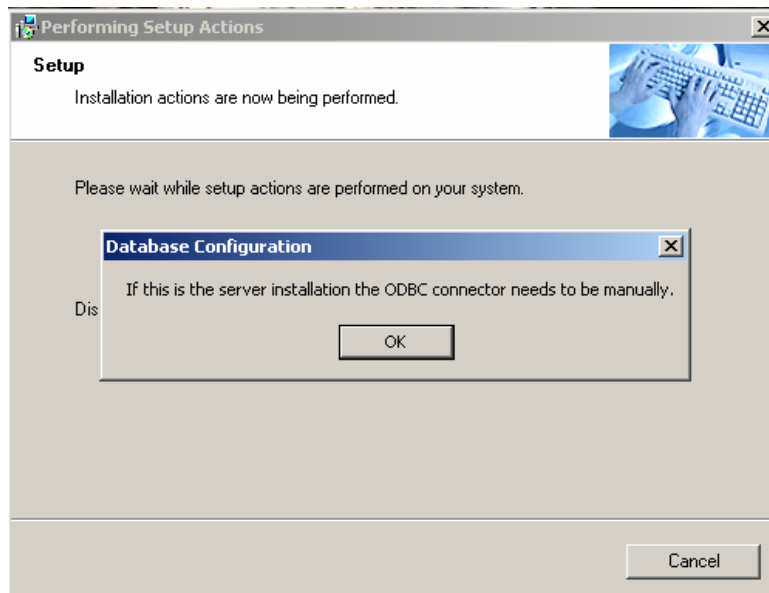


Figure 41: Installation Setup

- h. Select 'OK' to proceed

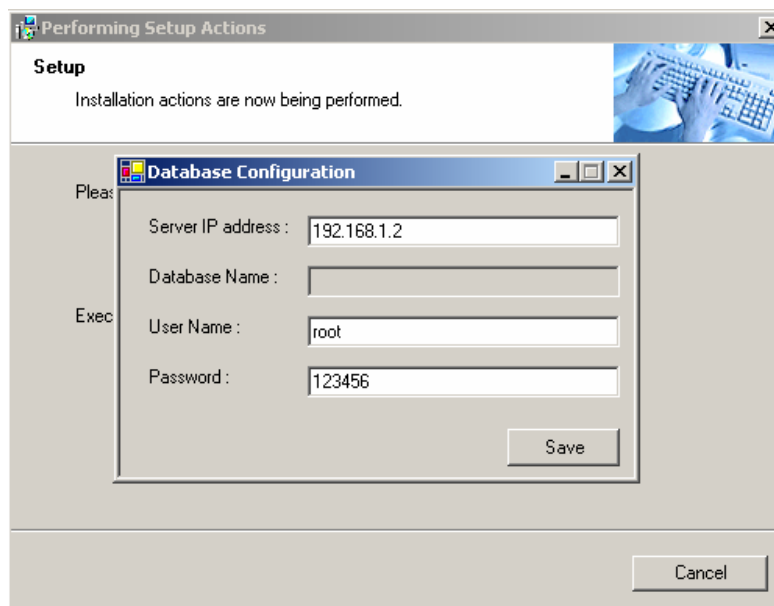


Figure 42: Database Configuration

- i. Please set the Server IP address, Database user name and Database password
- j. Refer to Figure 29 for the password

VERTECH

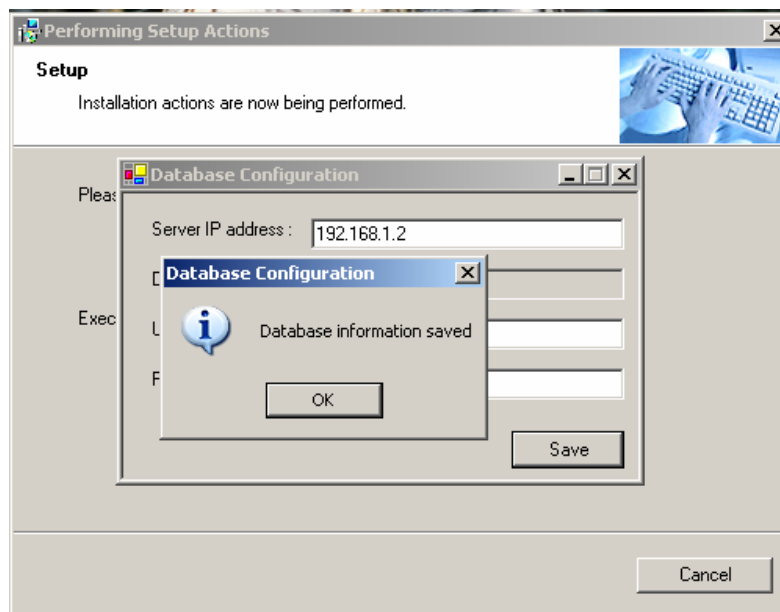


Figure 43: Saving Database Information

- k. Select 'OK' to proceed

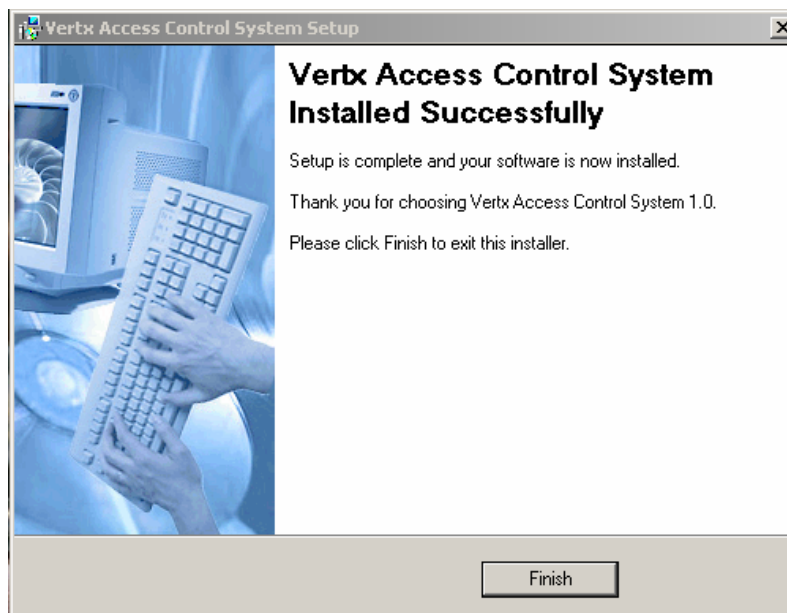


Figure 44: Installation Complete

- l. Select 'Finish' to complete the installation

VERTECH

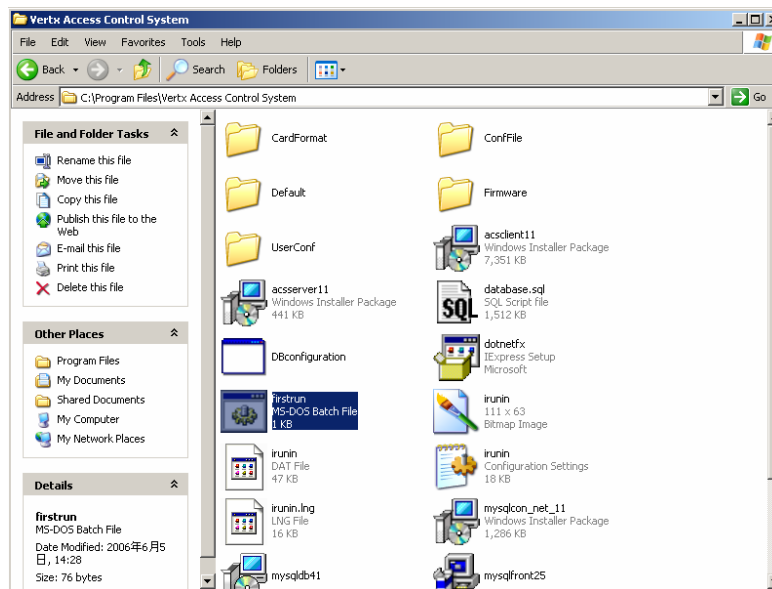


Figure 45: Database Creation

- m. After the installation is complete, the next step is to create the database.
- n. To do this, just go to the directory where the application is installed
- o. Select the 'firststrun' application
- p. Wait for the command to execute completely.

Nb: The steps to install the Client only Application is similar to the steps shown in Figure 10 to Figure 14.